



SINGLE-USE GI ENDOSCOPY SOLUTIONS

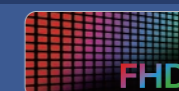
Ver: 20250321



Daichuan Medical (Shenzhen) Co., Ltd.
d/b/a EndoFresh
Shenzhen Biomedical Innovation Industrial Park, No. 14, Jinhui Road, Kengzi Street,
Pingshan District, Shenzhen, China
Tel: +86-755-89668350



For more product information and business inquiries, please click: www.endofresh.com or contact: dcyl@endofresh.com. EndoFresh trademark, related product logos, and patents are held by Daichuan Medical (Shenzhen) Co., Ltd. Reproduction in any way is prohibited without the permission of Daichuan Medical (Shenzhen) Co., Ltd. Please refer to the product manual for the contraindications or precautions. All rights reserved by Daichuan Medical (Shenzhen) Co., Ltd. Any modification to the product information and specifications are subject to the product manual.





No tangle

Built-in adjustable pumps including water irrigation for a hassle-free experience.



No compromises

Full HD output, generous internal storage for all recording and documentation needs.



A Fresh Endoscope for Every Procedure

The sterile and single-use scope minimises the risk of infections.



Fast Setup for Diverse Clinical Scenarios

Always prepared to meet a wide range of medical needs.



Affordable and Maintenance-Free

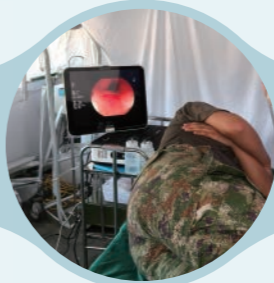
Reliable performance without the expense or delays of repairs.



Better managing infectious risks



Safeguarding vulnerable patients



Rapid response in field emergencies



Streamlining endoscopy training



Assisting procedures requiring high sterility (e.g., LECS)

XZING-S2 Video Processor for In-Hospital Use
Easily Complements Your Endoscopy Unit

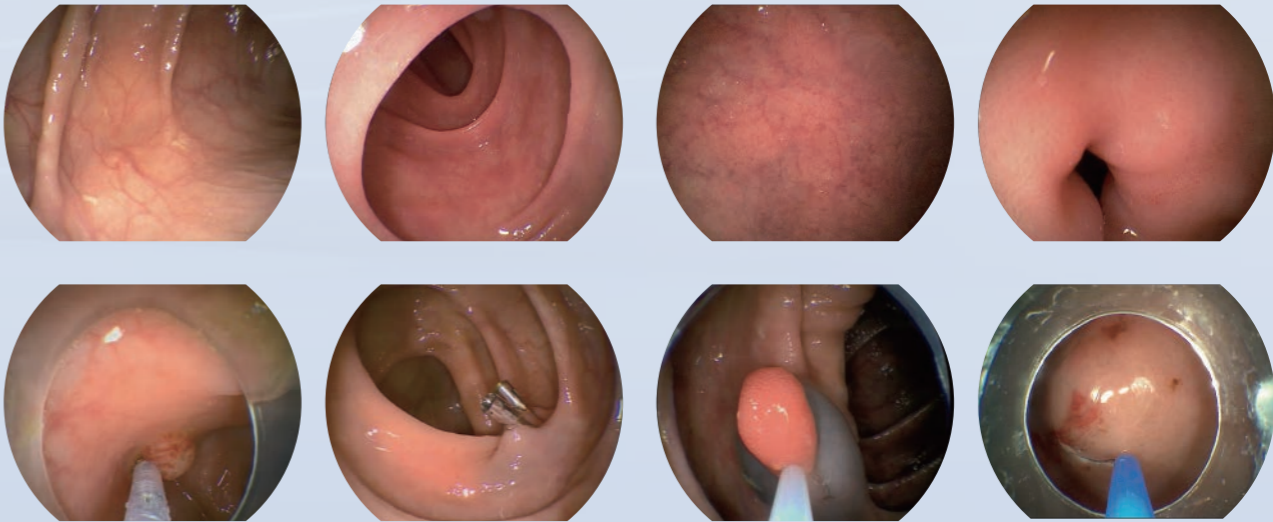


GEC-2000P
Portable All-in-One Video Processor
Modern Care in Motion

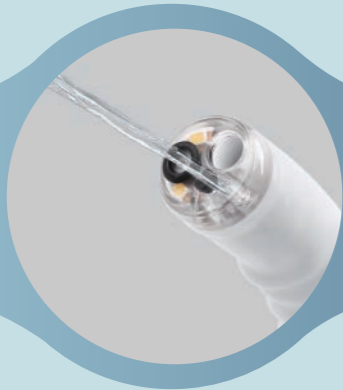


Model	XZING-S2
Power supply	100-240VAC 50/60 Hz
Dimensions (W×H×D)	435×160×370 mm
Weight	10.5 kg
Integrated monitor	/
Work station	/
White balance	Yes
Air feeding	Yes
Auxiliary water supply	Yes
Built-in suction	Yes
CO ₂ supply	Available by connecting to CO ₂ regulation unit
Output ports	USB, DVI

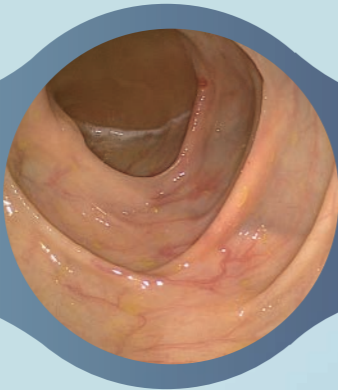
Model	GEC-2000P
Power supply	100-240VAC 50/60 Hz
Dimensions (W×H×D)	440×149.5×375 mm
Weight	15 kg
Integrated monitor	Yes
Work station	Yes
White balance	Yes
Air feeding	Yes
Auxiliary water supply	Yes
Built-in suction	Yes
CO ₂ supply	Available by connecting to CO ₂ regulation unit
Output ports	USB, HDMI
Record file formats	(Video) AVI or MP4, (Image) JPG



Single-use GI Endoscopes



Equipped with water-jet in all scopes



2MP CMOS image sensor delivers FHD imaging



Scope handle weighs as light as 250 grams



Supports hot plugging and pump auto-start



Individually packed, predictable performance

Designed to mirror the most-used parameters and match the high performance of reusable GI endoscopes, EndoFresh offers a broad range in its product line to tailor to today's endoscopists' needs. Its intuitive design eliminates the learning curve, ensuring a smoother, more efficient workflow.

All EndoFresh scopes and video processors are inter-compatible.

200 Series
Engineered for Everyday Excellence

The 200 series is suitable for routine upper and lower endoscopy procedures.

	Gastroscope	Colonoscope
Model	XZING-W200B	XZING-C200B
Field of view	140°	140°
Depth of field	3-100 mm	3-100 mm
Illumination	LED	LED
Working length	1300 mm	1300 mm
Channel inner diameter	3.2 mm	3.2 mm
Insertion tube outer diameter	11 mm	14 mm
Bending angulation range	Up 180° Down 160° Left 160° Right 160°	Up 180° Down 180° Left 160° Right 160°

300 Series
Uplifting the Therapeutic Potential



Developed with physicians' needs in mind, the 300 series is exceptionally agile thanks to its wide bending angulation and large instrument channel. Available in a variety of lengths, it opens up new possibilities in therapeutic endoscopy.

	Gastrosopes		Colonoscopes		
Model	DG-R300M	DG-T300S	DC-T300L	DC-T300M	DC-T300S
Field of view	140°	140°	140°	140°	140°
Depth of field	3-100 mm	3-100 mm	3-100 mm	3-100 mm	3-100 mm
Illumination	LED	LED	LED	LED	LED
Working length	1100 mm	900 mm	1650 mm	1300 mm	900 mm
Channel inner diameter	3.8 mm	3.8 mm	4.2 mm	4.2 mm	3.8 mm
Insertion tube outer diameter	10.8 mm	10.8 mm	13 mm	13 mm	10.8 mm
Bending angulation range	Up 210° Down 160° Left 160° Right 160°		Up 210° Down 180° Left 160° Right 160°		